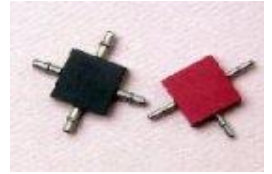




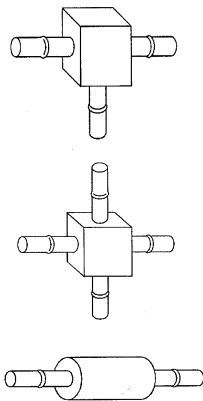
Pressure Fittings

Chell provide a range of pressure fittings in the 0.040" and 0.063" (1.0 and 1.5mm) range to accompany the ESP pressure scanners

Chell supply and carry a UK stock of a number of miniature pressure fittings which complement the Pressure Systems ESP scanners. These included T pieces, cross pieces, straight connectors, reducers, steel tubulations and manifolds. We also supply tubing, tubing springs and tubing pliers. The springs locate the tube by compressing it on the fitting side of the bulged tubulation. The tubing pliers make fitting the tube to the tubulations much easier.

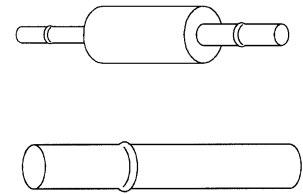


Instruments

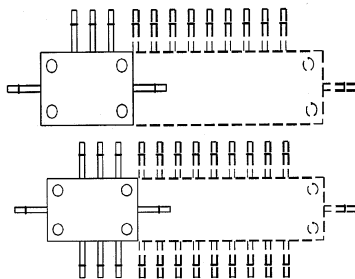


Description	Part Number	Price
T piece 0.040' (1.0mm)	CNNT-0101	Eur 9.40
T piece 0.063' (1.5mm)	CNNT-0201	Eur 9.40
T piece 0.125' (3.2mm)	CNNT-0301	Eur 13.58
Cross piece 0.040' (1.0mm)	CNNC-0101	Eur 9.40
Cross piece 0.063' (1.5mm)	CNNC-0201	Eur 9.40
Cross piece 0.125' (3.2mm)	CNNC-0301	Eur 13.58
Straight connector 0.040' (1.0mm)	CNNS-0101	Eur 9.40
Straight connector 0.063' (1.5mm)	CNNS-0201	Eur 9.40
Straight connector 0.125' (3.2mm)	CNNS-0301	Eur 13.58

Description	Part Number	Price
Reducer 0.063' to 0.040' (1.5 to 1.0mm)	RDCR-0101	Eur 9.40
Reducer 0.125' to 0.040' (3.2 to 1.0mm)	RDCR-0201	Eur 11.49
Reducer 0.125' to 0.063' (3.2 to 1.5mm)	RDCR-0301	Eur 11.49
Tubulation 0.040' x 0.55' (1.0 x 14mm)	27-07-B550	Eur 1.95
Tubulation 0.063' x 0.55' (1.5 x 14mm)	27-06-B550	Eur 1.95



Description	Part Number	Price
Spring 0.040' (1.0mm)	12-90-2540	Eur 0.38
Spring 0.063' (1.5mm)	12-90-2562	Eur 0.38
Spring 0.125' (3.2mm)	12-90-25170	Eur 2.70



Description	Part Number	Price
Manifold, single row, 0.040' (1.0mm) tubes	MC40-0101XX	Euro 15.67
Manifold, single row, 0.063' (1.5mm) tubes	MC63-0101XX	Euro 15.67
Manifold, dual row, 0.040' (1.0mm) tubes	MC40-0201XX	Euro 26.11
Manifold, dual row, 0.063' (1.5mm) tubes	MC63-0201XX	Euro 26.11

XX is equal to the number of tubes from 1 to 16 on a single row manifold and 2 to 32 on a dual row. Please add Eur 2.10 per additional tube.

Description	Part Number	Price
Translucent thin walled PVC tubing 0.040' (1.0mm)	TUB-040	Eur 315 per 300m
Translucent thin walled PVC tubing 0.063' (1.5mm)	TUB-063	Eur 175 per 150m
Translucent thin walled polyuretane tubing 0.040' (1.0mm)	TUB-040P	Eur 220 per 300m
Translucent thin walled polyuretane tubing 0.063' (1.5mm)	TUB-063P	Eur 220 per 300m
Tubing pliers	STP2	Eur 135



Quick Disconnects

Chell also supply the Pressure Systems range of quick-disconnects. These allow the removal and reconnection of an number of pressure ports with a single fitting. They are available in rectangular and circular form and also with mating blanks. For further information on the circular quick-disconnects please see the data sheet on the Chell web site.



Rectangular Quick Disconnects QDCS

The rectangular quick-disconnect (QDCS) consists of two plates that are bolted together with a captive 'o' ring seal between them. They are available in 20, 36 and 52 port configurations:

Description	Complete Unit	One half Only
20 port rectangular quick-disconnect	Eur 466.67	Eur 325.00
36 port rectangular quick-disconnect	Eur 561.11	Eur 348.61
52 port rectangular quick-disconnect	Eur 655.56	Eur 419.44

The part number of the QDCS is QDCS- AA BB CC where:

AA is equal to the tubing on the female side, that is the side without 'o' rings
 AA = 00 for no female half supplied
 AA = 01 for 0.040' (1.0mm) tubes
 AA = 02 for 0.063' (1.5mm) tubes
 AA = 03 for a blank female half

CC is equal to the number of tubes on each side of the QDCS
 CC = 01 for 20 tubes
 CC = 02 for 36 tubes
 CC = 03 for 52 tubes

BB is equal to the tubing on the male side, that is the side with 'o' rings
 BB = 00 for no male half supplied
 BB = 01 for 0.040' (1.0mm) tubes
 BB = 02 for 0.063' (1.5mm) tubes
 BB = 03 for a blank male half

For example, the part number for a 52 port QDCS with 0.040' tubulations on the female half and 0.063' tubulations on the male half would be QDCS-010203



Circular Quick Disconnects QDCC

The circular quick-disconnect consists of a bulkhead fitting (female) and a screw on male half. The bulkhead fitting contains the captive 'o' rings and they are available in 19, 37, 55 and 72 port versions.

The part number of the QDCC is QDCC- AA BB CC where:

AA is equal to the tubing on the female (bulkhead) side, that is the side with 'o' rings
 AA = 00 for no female half supplied
 AA = 01 for 0.040' (1.0mm) tubes
 AA = 02 for 0.063' (1.5mm) tubes
 AA = 03 for a blank female half

CC is equal to the number of tubes on each side of the QDCS
 CC = 01 for 19 tubes
 CC = 02 for 37 tubes
 CC = 03 for 55 tubes
 CC = 04 for 72 ports

BB is equal to the tubing on the male side, that is the side without 'o' rings
 BB = 00 for no male half supplied
 BB = 01 for 0.040' (1.0mm) tubes
 BB = 02 for 0.063' (1.5mm) tubes
 BB = 03 for a blank male half

Description	Complete Unit	One half Only
19 port circular quick-disconnect	Eur 466.67	Eur 325.00
37 port circular quick-disconnect	Eur 797.22	Eur 513.89
55 port circular quick-disconnect	Eur 844.44	Eur 537.50
72 port circular quick-disconnect	Eur 938.89	Eur 608.33



Chell Instruments Ltd
 Folgate House
 Folgate Road
 North Walsham
 Norfolk NR28 0AJ
 England

Tel.: +44 (0)1692 500555
 Fax: +44 (0)1692 500088

E-mail : sales@chell.co.uk

Web site : www.chell.co.uk