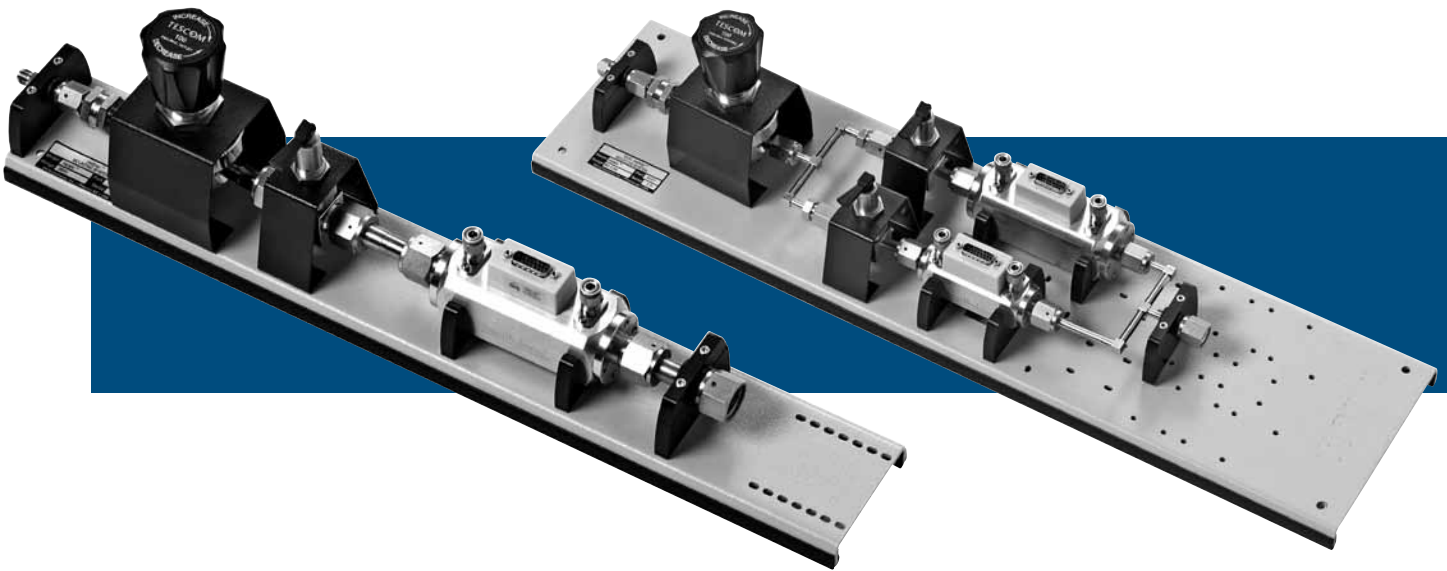


# molstic-L™ Mounting Systems for molbloc-L® Mass Flow Elements

## Technical Data



molstic molbloc mounting systems are available to assist you in realizing the full performance benefits of your molbloc/molbox™ system. molstics provide an engineered solution to the practical issues of mounting the molbloc, connecting a gas supply, regulating the pressure and connecting the device to be tested. Highest quality components are integrated into a compact assembly to assure optimum molbloc/molbox performance.

molstics provide a quick connector input for convenient connection to the gas supply. This is followed by a 2 micron (0.5 micron for low flow) filter to protect the downstream components. Then, an adjustable regulator sets and regulates optimum molbloc upstream pressure and protects the molbloc transducers against accidental overpressure. The regulator range supports all standard molbloc operating pressure ranges. A bellows shut-off valve, just before the molbloc, allows the gas supply to be shut-off for configuration changes and/or system leak checking.

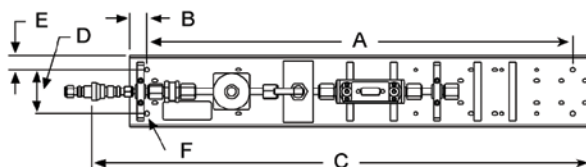
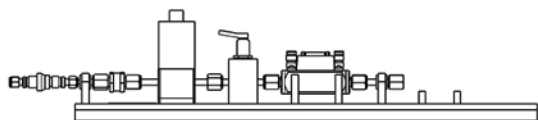
Special cradles support the molbloc(s). A connection and pads are provided downstream of the molbloc for mounting the MFC (mass flow controller), another device under test, or the optional metering valve kit for manual flow control.

Single channel molstics are available to accommodate single molblobs. Dual channel models allow two molblobs to be mounted simultaneously to switch between two different molbloc ranges without changing hardware or to take advantage of molbox1's capability to run two molblobs in parallel.

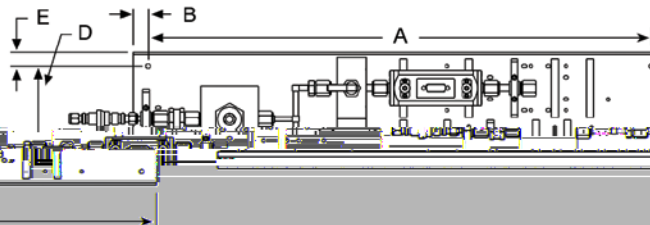
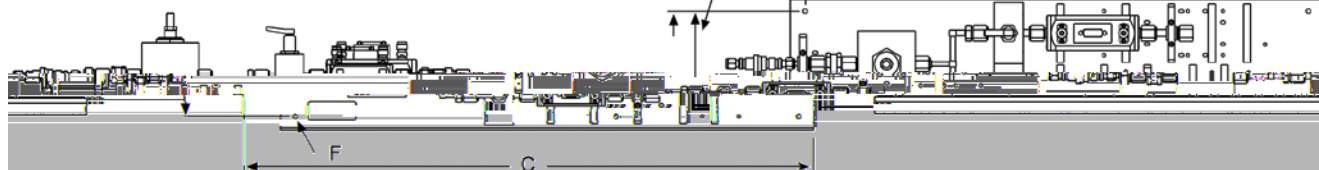
There are low, mid and high flow versions of molstic. Low flow molstics use a unique, very high stability pressure regulator and minimize dead volumes. They are required for effective use of 2E2-L and lower molblobs and can be used up to the 1E3-L molbloc size. The mid flow molstics cover the ranges of all the molblobs from as low 2E2-L up to the 3E4-L. The high flow molstic is required for the 1E5-L (100 slm) molbloc and supports that molbloc only.

## Pneumatic schematic

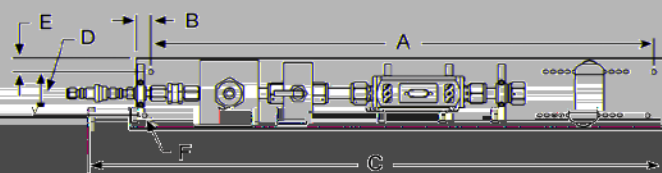
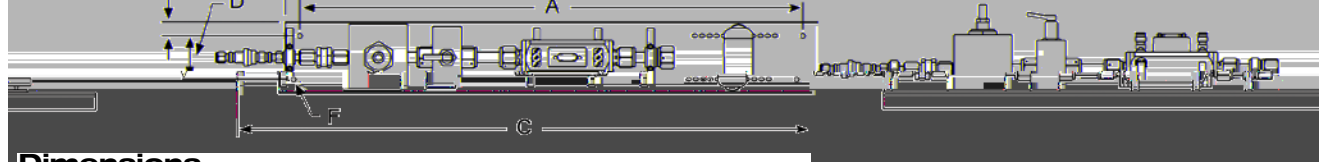
single, low flow



dual, mid flow



single, hi flow



### Dimensions

	A	B	C	D	E	F
Single, low flow	584 mm (22.99 in)	26 mm (1.02 in)	687.3 mm (27.06 in)	60 mm (2.36 in)	19 mm (0.75 in)	6.40 mm (0.252 in) mounting holes, 4 PL
Dual, mid flow	690 mm (27.17 in)	20 mm (0.79 in)	752.4 mm (29.62 in)	144 mm (5.67 in)	19 mm (0.75 in)	6.40 mm (0.252 in) mounting holes, 4 PL
Single, hi flow	690 mm (27.17 in)	20 mm (0.79 in)	787.7 mm (31.01 in)	60 mm (2.36 in)	19 mm (0.75 in)	6.40 mm (0.252 in) mounting holes, 4 PL

### Configuration notes

- 1E1-L to 5E3-L molblobs are "small" molblobs. 1E4-L to 1E5-L molblobs are "large" molblobs. The 1E5-L molstic is unique due to its end fittings.
- The hi flow molstic supports only the 1E5-L molstic with 1/2 in. VCR male end fittings. Low and mid flow molstics can only be used with molblobs having 1/4 in. VCR male end fittings (1E1-L to 3E4-L molblobs).
- The downstream connection of low and mid flow molstics is 1/4 in. VCR female and an adaptor to 1/4 in. male Swagelok is provided. The downstream connection of the hi flow molstic is 1/2 in. VCR female and a 1/4 in. VCR female adaptor is provided.
- The optimum range distribution between low and mid flow molstics is low for molblobs of 1E3-L and below and mid for molblobs from 5E3-L to 3E4-L. The 1E5-L molstic requires the hi flow molstic which supports no other molstic size.
- Mid molstics are designed to mount either large or small sized molblobs. Same size molblobs can be interchanged quickly on any molstic. More effort is required to interchange molblobs of different sizes.

## Ordering information

### Model

- molstic single, low flow** Single molstic, 1E3-L or lower
- molstic dual, low flow** Two molstics, 1E3-L or lower
- molstic single, mid flow** Single molstic, 2E2-L to 3E4-L
- molstic dual, mid flow** Two molstics, 2E2-L to 3E4-L
- molstic single, hi flow** Single molstic, 1E5-L only

### Accessories

- Tee, Downstream for dual mid molstic** Connect two same size molstics together at outlet
- Tee, Downstream, lrg/sml for dual mid molstic** Connect large and small size molstics together at outlet
- Metering Valve low flow molstic** Install on molstic downstream of molstic for manual flow control
- Metering Valve mid/hi flow molstic** Install on molstic downstream of molstic for manual flow control

**Fluke. Keeping your world up and running.®**

**Fluke Calibration**  
PO Box 9090, Everett, WA 98206 U.S.A.

**Fluke Europe B.V.**  
PO Box 1186, 5602 BD  
Eindhoven, The Netherlands

**For more information call:**  
In the U.S.A. (800) 443-5853 or  
Fax (425) 446-5116  
In Europe/M-East/Africa +31 (0) 40 2675 200 or  
Fax +31 (0) 40 2675 222  
In Canada (800)-36-FLUKE or  
Fax (905) 890-6866  
From other countries +1 (425) 446-5500 or  
Fax +1 (425) 446-5116  
Web access: <http://www.fluke.com>

©2010 Fluke Corporation.  
Specifications subject to change without notice.  
molstic, molstic-L and molstic-L\* are trademarks, registered and otherwise, of Fluke Corporation. VCR and Swagelok are trademarks of the Swagelok Companies. Printed in U.S.A. 6/2010 3191941B B-EN-N

**Modification of this document is not permitted without written permission from Fluke Corporation.**